



Non Contact Laser selective Soldering for electronics applications



Some electronics parts need to be soldered in quite small and narrow spaces. Usually in such a situation is quite difficult to dispense the solder wire, therefore an energy beam, well directed and focused turns to be of great help.

Many applications require the shortest as possible tact time, while requesting high energy to accomplish a strong and reliable joint.

The Laser unit is often an excellent solutions for such difficult soldering tasks.

Our system is driven by CCD Camera to check and eventually correct beam positions in real time. The Robot Gantry type design allows simple integration in any production line.

MAIN LD SPECIFICATIONS

Laser Diode Power: 30W - 60W

Wave length: CW type - 808 - 980 nm

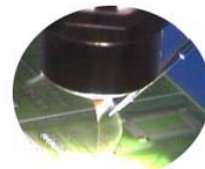
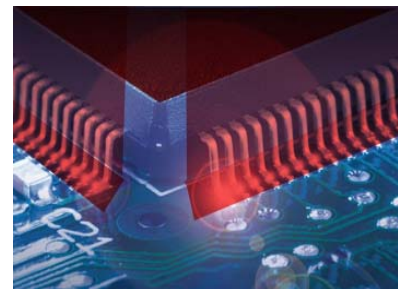
Minimum Focus: 0,2 - 0,4 - 0,6 mm spot

Focusing Distance: 50 mm

Optical Fiber: 2,0 mt - Fiber bending radius: 300 mm

Cooling: Air Cooling

Control Type: Manual or external I/O with safety Interlock



Smt & Through holes -PCB & Flex Circuit - Micro & Macro Electronics devices

for further information

ETNEO ITALIA
Scientific & Technology Park
Via Bovio 6 - 28100 Novara - Italy
Tel +39 0321 697.200 - Fax +39 0321 688.515
www.etneo.com
Email: info@etneo.com

